

USER GUIDE

आकृति नेक्सट AKRUTI NEXT

शब्द एकभाषा अनेक



Welcome

Congratulations!! On the purchase of Akruti Next the easiest way to start working with Indian Languages in Unicode on your personal computer.

You can have fun working with your PC in your mother tongue. You can send e-mails, design your web pages, send greeting cards, prepare visiting cards, design your personal letter pad, write school and college notes, legal documents, agreements, letters, infact anything and everything that could be done with most windows based application. **Akruti Next** can be used by companies for in-house magazines, religious publications, social service organisations for creating any kind of Local Language contents.

Akruti Next is easy to install, requiring about 150MB space on your Hard Disk. It comes with professional quality fonts that are used by DTP professionals. It has popular Keyboard Layouts to facilitate easy learning and typing. With this package one can do work on most of the Windows applications in Indian languages.

Go Ahead & Have Fun with Akruti

No part of this publication may be reproduced, transmitted, transcribed, stored in a retrieval system or translated to any language in any form by any means without the express written permission of **Cyberscape Multimedia Limited**.

COPYRIGHT

Akruti Software is the intellectual property of **Cyberscape Multimedia Limited**.

Please read the license agreement before installing the software.

Akruti Next is a product of Cyberscape Multimedia Limited and is available with various options. The contents of the software will depend upon the purchased options and the specifications may vary from time to time. Kindly check at the time of purchase about the details of the options, if required. The product covered in this manual is Akruti Next.

Windows 2000, Windows XP and Windows Vista are trademarks of Microsoft Corporation. ATM is trademark of Adobe Systems Inc. LaserJet is trademark of Hewlett - Packard Co. All the other mentioned products are the trademarks of their respective owners.

AKRUTI Next & MICROSOFT WINDOWS

Akruti Next provides Indian Language Interface to Microsoft Windows Operating System developed by Microsoft Corporation.

AKRUTI NEXT SOFTWARE LICENSE AGREEMENT

Opening this package indicates your acceptance of the terms and conditions in this “**License Agreement**”. This software product is provided by **Cyberscape Multimedia Limited, (Cyberscape)** either directly or through its dealer network only upon the following terms and conditions.

This is a legal agreement between **Cyberscape** and the Licensee. Cyberscape reserves the right to take suitable action in case of any violations

DISCLAIMER

1. Cyberscape makes no warranties or representations with respect to the contents or the performance of Akruti Next Software or this manual.
2. The user is recommended to check any specific requirements thoroughly before purchasing the software.
3. Cyberscape is not responsible for the installation and solving any problems arising out of this software package.

LICENSEE

The Licensee assumes full responsibility for the selection, installation and use of the program. Cyberscape assumes no responsibility for any direct/indirect damages ensuing from the use of this program.

Copies of the program can be made only for back up purpose. When such back-up copies can not be used for commercial purpose.

License : This software is licensed to work in one PC only. Additional licenses are to be purchased separately. For users with multiple licenses, you need to get a separate license certificate indicating the number of licenses. Corporate License is available for large organisations with multiple PCs and multiple locations. Contact us for more details.

ACKNOWLEDGMENT

We convey our sincere thanks with the deepest gratitude to the following persons without whom this product would not have been possible.

We thank the almighty for guiding us to develop this software. We also thank all the users of Akruti, all the employees of Cyberscape Multimedia Limited, the distributors & resellers of Akruti, all other developers of Indian Language software, our family members and all who have contributed to the product.

We express our deepest gratitude to Rajbhasha departments of all Central and State Government Organisations and PSUs, who have provided us with valuable feedback to improve the product.

About Akruti Next

What is Akruti Next Software ?

Akruti Next is a general purpose yet powerful software which enables one to type in any Indian language in Unicode in most of application software on your computer with the same ease as English. So from now on you can use any language of your choice with any of your application program. It is easy to install and easier to use. It comes with popular Keyboard Layouts viz. English Phonetic, DoE Inscript, Typewriter, Executive.

It can be used by practically everybody, who uses computers for the love and fun of using the computer in your mother tongue. You can use Akruti Next in all the applications under Windows. You can use it effectively in Offices, Public Sector Undertakings, Nationalised Banks, Co-operative Banks, Schools, Colleges, Training Institutes, Authors, Writers, Students, Executives, Businessmen, Social Service Organisations, Politicians, Trade Unions, and all others, who have a love for the language and a computer to use.

Features –

- 1) Easy to install and use by the user.
- 2) Contains Unicode TrueType fonts.
- 3) Professional Typefaces to do any kind of job.
- 4) Variety of Keyboard Layouts to meet the popular demand.
- 5) Can be used to create Language contents for Web Pages.
- 6) Can be used for sending e-mails in your language.
- 7) Powerful utilities.
- 8) API calls to develop Applications in Indian Languages.

The support and the responsibility

Cyberscape Multimedia Limited will be very happy to give our valuable customers every support they wish, related to the **Akruti Next**. But the package being so user friendly, we wish to make the user responsible for the procurement and the installation of the basic software needs. **Cyberscape** will, in no way be connected with the procurement & installation of the pre-requisites. To know about the software requirements, see the chapter under the heading “Pre-requisites”. **Cyberscape** also wishes to inform that problems that are not related to the basic functioning of **Akruti Next** software will not be a part of the software support. **Cyberscape** will provide support to its registered users through e-mail or telephone. On-site support will be charged extra.

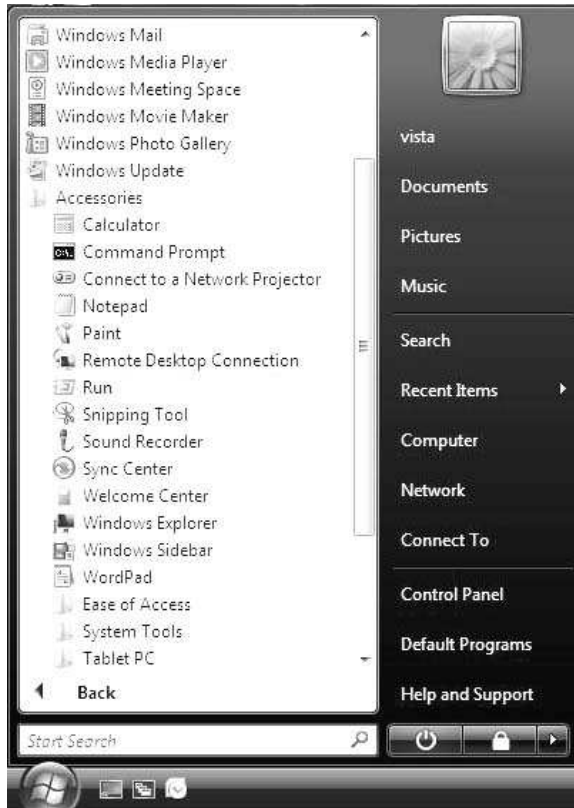
Packing List

The **Akruti next** software package consists of the following –

1. Akruti Installation CD
2. Akruti User manual.
3. Keyboard Layout Sticker(s) for your convenience.

Akruti Installation procedure for Windows 95/98/2000/NT/XP/Vista

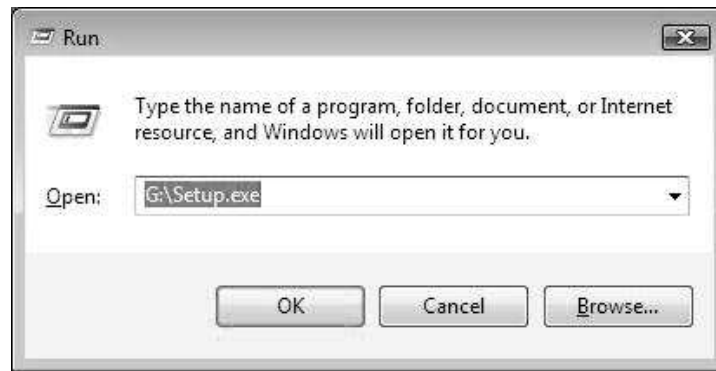
1. Start *WINDOWS*



2. Choose **RUN** from **START** menu.



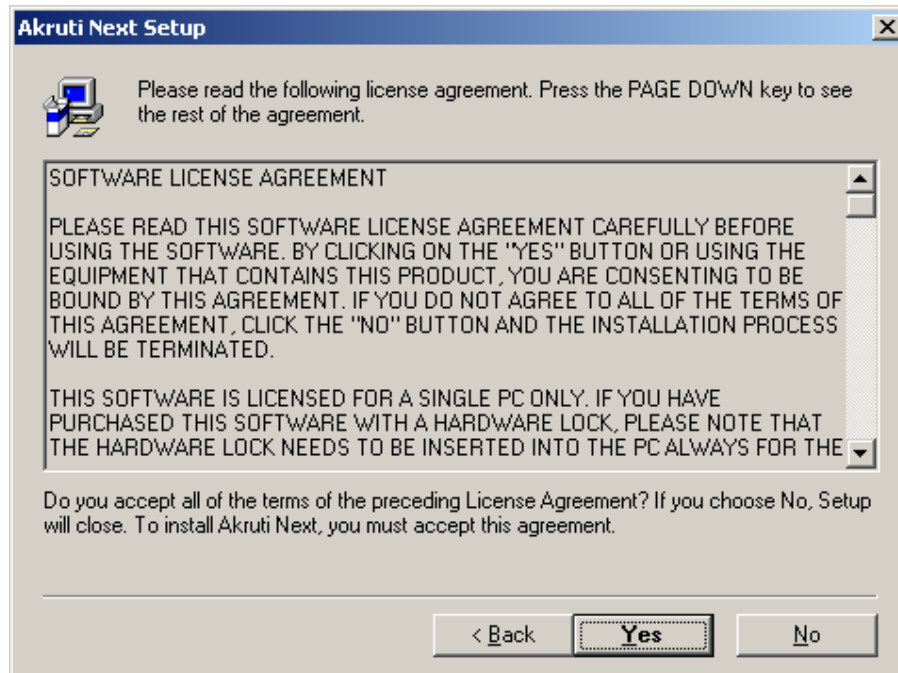
3. In the **Run** dialog , click the **Browse** button to open the Browse dialog box.
4. In the **Browse** dialog box, select the CD-Drive in which the Installation CD is kept.



- 5) Choose **SETUP.EXE** from the directory.
- 6) The following window is displayed.



- 7) This window will be followed by License Agreement which you have to accept to go ahead.



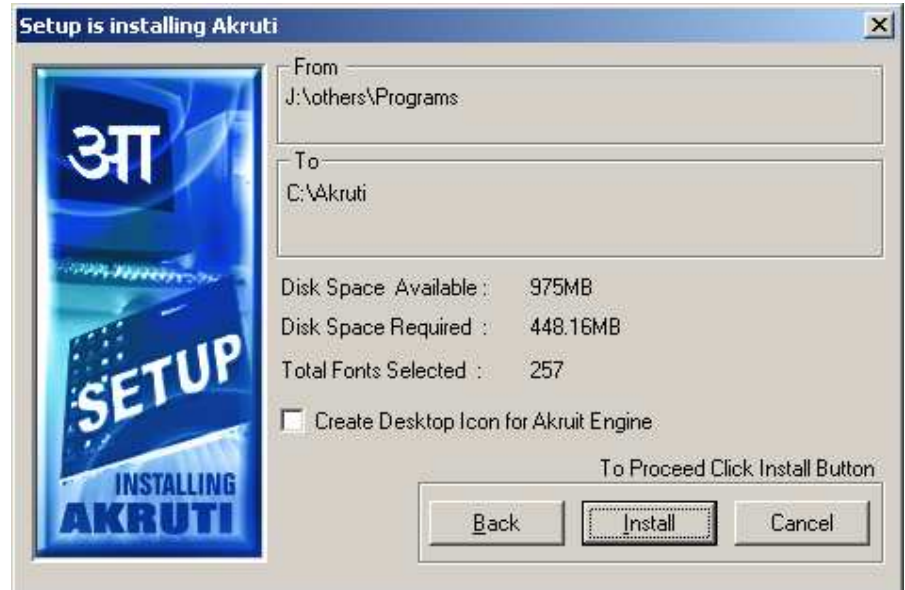
8. After that provide your CD information.

cd serial no is available on top of cd.

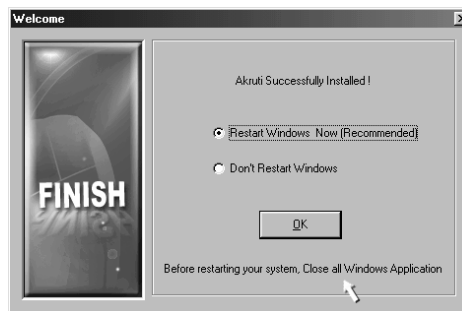
9. After that select your destination directory. You can specify a directory name in which you wish to install Akruti or simply press Next to install in the default directory **c:\Akruti**.



10. Check the box “**Create Icon on the Desktop**” if you want a shortcut to be on the Desktop.



11. Then click on the Install button. After this actual installation begins.
12. During this phase, the files necessary for Akruiti software are copied into the specified directory.
13. After completion it will ask for Restart Windows. It is recommended that you restart your windows.



14. This will reboot the system automatically. Now you can go to the Akruiti folder in the menu, and run any of the programs associated with it.

How to Register your Akruti

1. Start **Akruti Engine** by clicking the Akruti icon created on the desktop or from **Start – Programs – Akruti – Akruti60.exe**.



Akruti Registration

akruti
NEXT
REGISTRATION
it's different

CD Serial No : XXXX-XXXX-XXXX-XXXX

Product ID : 9564-9285-1733-1834

Registration ID :

Notes : Get your Registration ID from the CML website www.akruti.com/register or by sending the Registration card duly filled (product ID) to any of the CML branches

Register Later Close

2. When you start the engine it shows **Registration form** and asks for **Registration ID**.
3. **CD-serial** was given by you when you installed the software.
4. **Product ID**, is generated by Akruti according to your PC. It will be different for each and every computer.
5. Based on **CD serial** number and **Product ID**. We are generating **Registration ID** (this is also sixteen digit number, each four digit number separated by a hyphen).
6. You have to communicate the Product ID and CD serial number, customer details to us, this can be done by phone/fax or by e-mail. Web registry services will be started soon to register the product. On receipt of this information we will provide the Registration ID. The given Registration ID will work only on that particular PC. For additional PCs, extra licenses will have to be purchased.
7. You can start Akruti without registering also by clicking the "Register Later" button. Akruti will work for 15 days from the date of installation without registering. Akruti will work as a full version during this period, for the last 3 days it will display a message "Product in trial". Simply click **OK** and continue working.

Note: If you change the system date backward or forward the trial period will be over. You have to reformat the system before reinstalling Akruti.

- e-mail :info@akruti.com

UNINSTALLING AKRUTI

To uninstall the AKRUTI click the **Uninstall** Program from Akruti Program group. This will remove all the fonts, programs and the files copied by the setup program. This will not remove any files created by the user lying in Akruti directory.

WHEN YOU ARE IN TROUBLE

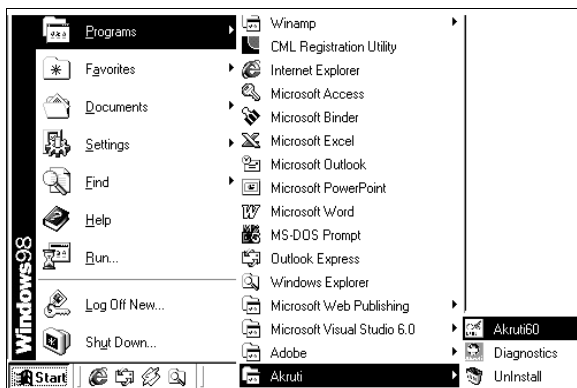
Akruti is easy to install and normally user should not encounter any problem while installing and using the software. However some useful tips are given here.

Problem related to installation -

As far as the installation problems are concerned, either you may get an error saying that the CD is not readable or you may get an error during the installation procedure. In both the cases (and any other defect), kindly send the faulty CD to our office at MUMBAI for replacement. The replacement is free of charge if returned within 30 days from the date of purchase (please send the xerox copy of bill) and if the damage is due to manufacturing defects. The decision of the company is final.

USING AKRUTI

To start the Akruti program, click on the Akruti icon on the desktop or from **Programs > Akruti Group** or execute the program **\\AKRUTI\AKRUTI60.EXE**.



Note: The program is not automatically loaded. You have to manually start this by clicking the icon.

This will load the software. The Akruti Engine is the heart of the software. From here you will be controlling your computer's multilingual capabilities. As soon as the engine is loaded, you will be introduced with a splash screen. Click on the screen to enter the engine interface.



The Akruti interface would be as shown above. all the menus will be explained later.

To type in any language in Bilingual fonts do the following :-

- Start the **Akruti Engine**.
- To see the keyboard select from the first option "**Akruti**" and then click on Display Keyboard (The selected keyboard will be displayed on the screen).
- Choose the language of your choice (Hindi) from the "**Script**" menu.
- Choose the layout of your choice from the "**Layout**" menu.
- Do not change the "**Application**" menu at this point of time.
- Select from the "Font" Menu "**Unicode**".
- Start your application like MS Office, Pagemaker etc.
- Press SCROLL LOCK key or click on the "**RED**" button when "**OFF**" is indicated it will change color to "**GREEN**" and "**ON**" will display.
- Start typing as per the layout.

To type in English, do the following :-

- Press the **SCROLL LOCK** key (OFF).
- Start typing in English.

Note : There is no need to close Engine program for typing in English. For typing again in language, repeat steps g to h above.

To type in any language in Regular fonts do the following:-

- a. Start the **Akruti Engine**.
- b. To see the keyboard select from the first option “**Akruti**” and then click on Display Keyboard (The selected keyboard will be displayed on the screen).
- c. Choose the language of your choice (**Hindi**) from the “**Script**” menu.
- d. Choose the layout of your choice from the “**Layout**” menu.
- e. Do not change the “**Application**” menu at this point of time.
- f. Select from the “**Font**” Menu “**Unicode**”
- g. Start your application like MS Office, Pagemaker etc.
- h. Press **SCROLL LOCK** key or click on the “**RED**” button when “**OFF**” is indicated it will change color to “**GREEN**” and “**ON**” will display.
- i. Start typing as per the layout.

To type in English, do the following :-

- a. Press the **SCROLL LOCK** key (**OFF**).
- b. Select the English font like **Arial, Times New Roman**.
- c. Start typing in English.

Note : There is no need to close Engine program for typing in English. For typing again in language, repeat steps f to h above.

Akruti English Halant f key. Nukta] key.

Phonetic Layout

DoE Inscript Layout Halant d key . Nukta] key.

Typewriter Layout Halant | key Nukta ' key
or shift + \ key. the key to the left of 1.)

1. Typing by using the Akruti English Phonetic method is very simple. Characters are typed the way it is spoken. For combining characters, type the first character followed by halant and then follow it by the second character. Example kra is typed as ka + halant + ra. Similarly shtra is typed as Sha + halant + Ta + Halant + ra. Halant is available on “f” key. Read the Typing Sequence section for details.
2. You may experience that some conjuncts do not appear as they should if you are using programs like CorelDraw 10, MS Excel, Ventura etc. Change the mode from Generic from the Application menu. Then change the application type depending on the software you are using as given in the “Application Menu”

Exploring Akruti

An Overview

This chapter gives you a detailed overview of how to extract the powers of Akruti. It helps to guide you through the menus, commands and useful shortcuts to enhance your working. You will be explained with some basic information, such as-

1. Activating Akruti and moving from one application to another.

2. Using Akrti Tools to create and manipulate multilingual text and graphics.
3. Working with text, including how and when to use Akrti Script.
4. Changing the language selection, keyboard selection and fonts.
5. Fixing up the problems in display, printing and basic functioning of the Akrti programs.

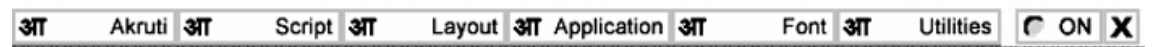
In the following session we will elaborate each item as it appears on each menu. This chapter is written with the basic assumption that the user is new to the multilingual software. However experienced users may find the tips and shortcut techniques very useful for them.

Experiment freely with the utilities and techniques presented in this chapter. Don't worry about making mistakes. You can always refer to the respective topics again. Above all, have fun exploring Akrti.

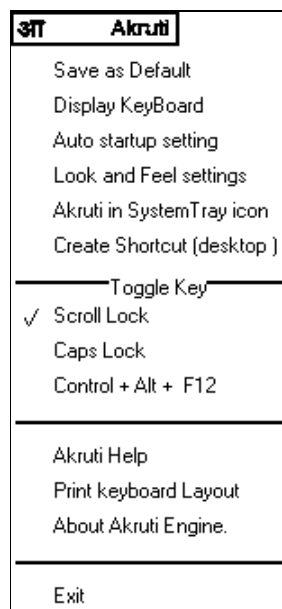
Akrti Engine



This is the core program of Akrti. It gets loaded when the Akrti Engine icon is clicked. It can also be invoked later if desired so.



When the Akrti Engine system hook gets loaded, a sign on message is displayed. This message is self explanatory and it is to guide the next move for the operator.



The menu wise details of this application are as follows:

Save as Defaults

To save the current setting as default. The setting involves the language, keyboard layout, application and the toggle key selection. The selected script, layout, application, toggle key options will be saved for further use. You will get the same options when you start windows hereafter, or even after putting the computer off. Otherwise the changes in the settings will be lost when you exit the application.



Display Keyboard

This option will display the current selected keyboard Layout.



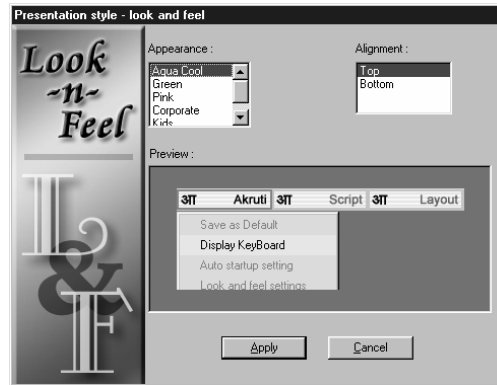
Auto Startup Setting

With This option you can set the auto startup. This will start the Akruti Engine as soon as a window starts up.



Look and Feel setting

This option you can change the look of Akruti engine. You can change the colour and location of the engine



Create Shortcut (Desktop)

This will create a short cut item on the desktop to start AkruTi.

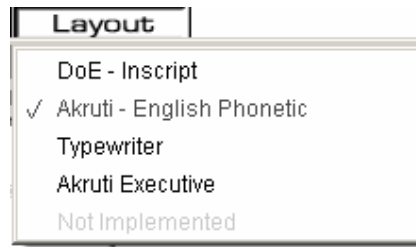
Script



This menu is used to select the language you want to use. The currently selected language is indicated by a tick mark on to the left.

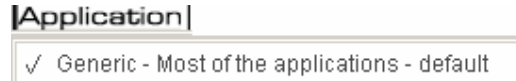
Note : The language selected there will be applicable for all the Windows applications that are currently running in your system.

Layout



Caution: Certain keyboard layouts will not be available for all the languages. An error message will be flashed if such a combination is selected.

Application Menu



Though all windows applications handle the system resources in a uniform way, the keyboard character codes get interpreted differently by different programs. In this menu, options are provided to select the applications in which you are going to work on, manually or automatically. Selecting Auto (default) will work well most of the programs. In case of any problem in any of the future application releases, choose manual mode and select the application type. If that language and the layout is still not working in that application, contact your CML.

Font Menu



Error Messages

If you choose a wrong layout that is not available in a particular language then an error message will be displayed and the current settings will not change.

Utilities Menu



Typing method using Akrti Executive Layout

This layout is based on English spellings equivalent to Hindi characters. Do not delete half of a block or character or matra. Delete the full phonetic block and retype the whole block. This method remembers the characters typed before, within a phonetic block. To start afresh, type a space and then delete it. This clears the residue in the buffer.

Character	Key(s) to be pressed	Char-acter	Key(s) to be pressed	Char-acter	Key(s) to be pressed
अ	a	क	ka	द	da
आ	A	ख	kha	ध	dha
इ	I	ग	ga	न	na
ई	I	घ	gha	प	pa
उ	u	ङ	shift 8 / Nga	फ	pha
ऊ	U	च	cha	ब	ba
ऋ	HRI	छ	chha	भ	bha
ए	e	ज	ja	म	ma
ऐ	AY	झ	jha	य	ya
ँ	E	ञ	shift - / Nja	र	ra
ओ	o	ट	Ta	ल	la
औ	AW	ठ	Tha	व	va
ॉ	OE	ड	Da	श	sha
अं	aM	ढ	Dha	ष	Sha /shha
अँ	aMM	ण	Na	स	sa
अः	a:	त	ta	ह	ha
-	-	थ	tha	क्ष	kSha/shift 3
क	Ka	ग	Ga	त्र	tra
ख	Kha	ज	Ja	ज्ञ	jNja / shift 5
फ	fa	ड़	DHa	ड़	Ra

Virtual Keyboard :

If you want to use Virtual Keyboard first install them.

To Install Virtual Keyboard goto VirtualKeyboard folder in CD and click on desired Language Folder and run particular setup. If you want to install all the languages

VirtualKeyboard run the AllVirtKBDSSetup.exe in VirtualKeyboard folder.

VirtualKeyboard folder will also be available in Akruti Folder after installation.

After that you may see the language bar settings in TaskBar. Choose the desired language and keyboard layout.

Goto Start Menu->Programs->Accessories->Accessibility->OnScreen Keyboard.

Click it and use Virtual Keyboard.

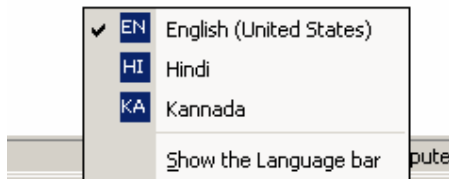
For Vista and above OS

Goto Start Menu->Programs->Accessories->EaseofUse->OnScreen Keyboard. Click it and use Virtual Keyboard.

For detail please refer Akruti Manual. This Program is to type Hindi Language text with a mouse.

Enabling Virtual keyboard:

Goto the language Bar which shows at the bottom near task bar



Select the language.



Type Assist

You can get a display like keyboard with normal and shift layouts or the varnamala sequence where all the vowel, consonants and matras are displayed.

Typing Sequence

The Hindi or language typing can be done by using the same English keyboard and using the similar sounding alphabet in English. The example will be k for क, t for त, r for र etc. Certain characters like ट, ठ, ड, ढ, ङ, ज, श, ष, ण, मात्रा, इ, ई, उ, ऊ, ए, ऐ, ओ, औ, ँ, ऌ, ऍ, ऎ, ॐ, ऽ require you to type some other keys as mentioned below. The combining of characters is achieved by using the halant key which is on the key `f'. For example kra (क़) is formed by `ka+halant+ra' (क + ् + र) or (kfr). Similarly `da_dha' (द़) in siddhi is formed by `da+halant+dha' (द + ् + ध) or (dfD). Similarly the short `ee matra' is typed after the character. क्ति is typed as `ka+halant+ta+ee_matra' (kfti). The reph character is formed as typing it as ra+halant+character. The word पूर्ण is typed as (pUrfNa). Devnagri can be activated by pressing **SCROLL LOCK** key. This is a toggle key for between English & Devnagri. The following table describes the key sequences to be :-

देवनागरी जोडाक्षर बनाने के लिए की-बोर्ड चार्ट

(Typing Sequence for Bilingual fonts)

हलन्त (d) = d (lower) for Phonetic 88 Key Board Layout

हलन्त (d) = f (lower) for English Phonetic Key Board Layout

हलन्त (d) = d (Back Slash) for Typewriter Key Board Layout

Type This Character	Get This Result	Type This Character	Get This Result
अ	= अ	क + ॅ = कै	
अ +	= आ	क + ऌ = कॉ	
इ	= इ	क + ॆ + क = कक	
ई	= ई	् is indicated as हलन्त	
उ	= उ	क + हलन्त + र = क्र	
ऊ	= ऊ	र + हलन्त + क = र्क	
ऋ	= ऋ	घ + हलन्त + न = घ्न	
ए	= ए	ड + हलन्त + क = ड्क	
ऐ	= ऐ	ड + हलन्त + ख = ड्ख	
अ + ो = ओ		ड + हलन्त + ग = ड्ग	
अ + ौ = औ		ड + हलन्त + घ = ड्घ	
अ + ॑ = अं		च + हलन्त + य = च्य	
अ + ॒ = अः		छ + हलन्त + र = छ्र	
अ + ॑ = अँ		ज + हलन्त + च = ज्च	
अ + ॑ = अॉ		ज + हलन्त + ज = ज्ज	
ए + ॑ = एँ		ट + हलन्त + ट = ट्ट	
र + ॑ = र्र		ट + हलन्त + ट = ट्ट	
र + ॑ = र्र		ट + हलन्त + ठ = ट्ठ	
॑ + नुक्ता = ॐ		ठ + हलन्त + ठ = ठ्ठ	
, + , = ।		ड + हलन्त + ढ = ड्ढ	
+ नुक्ता = ऽ		ढ + हलन्त + ढ = ढ्ढ	
. + नुक्ता = .		ण + हलन्त + म = ण्म	
1 + नुक्ता = !		त + हलन्त + त = त्त	

2	+ नुक्ता = ‘	त + हलंत + र = त्र
3	+ नुक्ता = ’	द + हलंत = दृ
4	+ नुक्ता = ?	द + हलंत + ग = द्र
5	+ नुक्ता = /	द + हलंत + द = द्
6	+ नुक्ता = ;	द + हलंत + ध = द्र्
7	+ नुक्ता = :	द + हलंत + र = द्र
8	+ नुक्ता = श्रा	द + हलंत + य = द्य
9	+ नुक्ता = ि	द + हलंत + व = द्व
0	+ नुक्ता = २	द + हलंत + ब = द्र
क + नुक्ता = क		द + हलंत + भ = द्र
ग + नुक्ता = ग		न + हलंत + न = न्न
ज + नुक्ता = ज		प + हलंत + र = प्र
ड + नुक्ता = ड		र + हलंत + त = र्त
ढ + नुक्ता = ढ		ल + हलंत + ल = ल्ल
फ + नुक्ता = फ		श + हलंत + न = श्न
क + ि = का		श + हलंत + च = श्च
क + ि = कि		श + हलंत + व = श्व
क + ि = की		0 + नुक्ता + ल = श्ल
क + ु = कु		श + BS + व = श्व
क + ू = कू		श + हलंत + र = श्र
क + ु = कु		ष + हलंत + ण = षण
क + ै = कै		ह + हलंत + य = ह्य
क + ै = कै		ह + हलंत + र = ह्र
क + ो = को		ह + हलंत = ह
क + ौ = कौ		ह + हलंत + म = ह्म
क + ो = को		ह + हलंत + न = ह्न
क + : = कः		ह + हलंत + ल = ह्ल
क + े = के		ह + हलंत + व = ह्व
क + े = के		ह + हलंत + ण = हण

**देवनागरी जोडाक्षर बनाने के लिए की-बोर्ड चार्ट
(Typing Sequence for Regular fonts)**

हलंत (d) = d (lower) for Phonetic 88 Key Board Layout

हलंत (d) = f (lower) for English Phonetic Key Board Layout

हलंत (d) = d (Back Slash) for Typewriter Key Board Layout

Type This Character	Get This Result	Type This Character	Get This Result
अ = अ		क + ु = कँ	
अ + ि = आ		क + ौ = कौ	
इ = इ		क + ु + क = क्क	
ई = ई		、 is indicated as हलंत	
उ = उ		क + हलंत + र = क्र	
ऊ = ऊ		र + हलंत + क = र्क	
ऋ = ऋ		घ + हलंत + न = घ्न	
ए = ए		ड + हलंत + क = ड्र	
ऐ = ऐ		ड + हलंत + ख = ड्रख	

अ	+	ो	=	ओ	ड	+	हलंत	+	ग	=	ङ
अ	+	ौ	=	औ	ड	+	हलंत	+	घ	=	ङ्घ
अ	+		=	अं	च	+	हलंत	+	य	=	च्य
अ	+	:	=	अः	छ	+	हलंत	+	र	=	छ्र
अ	+	~	=	अँ	ज	+	हलंत	+	च	=	ज्च
अ	+	ँ	=	ऑ	ज	+	हलंत	+	ज	=	ज्ज
ए	+	~	=	एँ	ट	+	हलंत	+	ट	=	ट्ट
र	+	ु	=	रु	ट	+	हलंत	+	ठ	=	टु
र	+	ू	=	रू	ठ	+	हलंत	+	ठ	=	ठु
°	+	नुक्ता	=	अँ	ड	+	हलंत	+	ढ	=	डु
,	+	,	=	।	ढ	+	हलंत	+	ढ	=	डु
।	+	नुक्ता	=	ऽ	ण	+	हलंत	+	म	=	ण्म
.	+	नुक्ता	=	॰	त	+	हलंत	+	त	=	त्त
१	+	नुक्ता	=	!	त	+	हलंत	+	र	=	त्र
२	+	नुक्ता	=	'	द	+	°	=	दृ		
३	+	नुक्ता	=	'	द	+	हलंत	+	ग	=	द्र
४	+	नुक्ता	=	?	द	+	हलंत	+	द	=	द्द
५	+	नुक्ता	=	/	द	+	हलंत	+	ध	=	द्ध
६	+	नुक्ता	=	;	द	+	हलंत	+	र	=	द्र
७	+	नुक्ता	=	:	द	+	हलंत	+	य	=	द्य
८	+	नुक्ता	=	श	द	+	हलंत	+	व	=	द्व
९	+	नुक्ता	=	ल	द	+	हलंत	+	ब	=	द्व
०	+	नुक्ता	=	२	द	+	हलंत	+	भ	=	द्भ
नुक्ता	+	क	=	क	न	+	हलंत	+	न	=	न्
नुक्ता	+	ग	=	ग	प	+	हलंत	+	र	=	प्र
नुक्ता	+	ज	=	ज	र	+	हलंत	+	त	=	र्त
नुक्ता	+	ड	=	ड	ल	+	हलंत	+	ल	=	ल्ल
नुक्ता	+	ढ	=	ढ	श	+	हलंत	+	न	=	श्न
नुक्ता	+	फ	=	फ	श	+	हलंत	+	च	=	श्च
क	+	।	=	का	श	+	हलंत	+	व	=	श्च
क	+	ि	=	कि	°	+	नुक्ता	+	ल	=	श्ल
क	+	ी	=	की	श	+	BS	+	व	=	श्व
क	+	ु	=	कु	श	+	हलंत	+	र	=	श्र
क	+	ू	=	कू	ष	+	हलंत	+	ण	=	ष्ण
क	+	ु	=	कु	Shift	+	य	=	च		
क	+	ँ	=	के	ह	+	हलंत	+	य	=	ह्य
क	+	ँ	=	कै	ह	+	हलंत	+	र	=	ह्र
क	+	ो	=	को	ह	+	°	=	ह		
क	+	ौ	=	कौ	ह	+	हलंत	+	म	=	ह्र
क	+	ँ	=	को	ह	+	हलंत	+	न	=	ह्र
क	+	:	=	कः	ह	+	हलंत	+	ल	=	ह्र
क	+	~	=	कँ	ह	+	हलंत	+	व	=	ह्र
					ह	+	हलंत	+	ण	=	ह्रण

Available Keyboard Layouts

Doe Inscript, English Phonetic, Typewriter, Executive

Available Keyboard Layouts

USER REGISTRATION CARD

CML Copy

Akruti

Others (Pl.

specify) _____

Product Code : _____ Date :

Serial No.: _____ Ref. :

Dealer :

Name :

Company

: _____

Address :

City : _____ State: _____ Pin

: _____

Phone : _____ Fax

: _____

e-mail

: _____

Signature of Authority

Signature of Customer

Please fill up this section and send it to CML office.

Bangalore Office :-

Regd. Office : # 941, 1st Flr, 21st Main, 22nd "A" Cross,
Banashankari II Stage, Bangalore - 560 070.

Ph.: (080) 2671 0925. Telefax : (080) 2671 4446.

e-mail : bangalore@cyberscapeindia.com

Development Center :-

Unit No.108, Building No.3, Sector 3, Millennium Business Park,
Mahape, Navi Mumbai - 400 710.

Ph.: (022) 2778 2779 – 80. Fax :- (022) 27782782.

e-mail : info@akruti.com